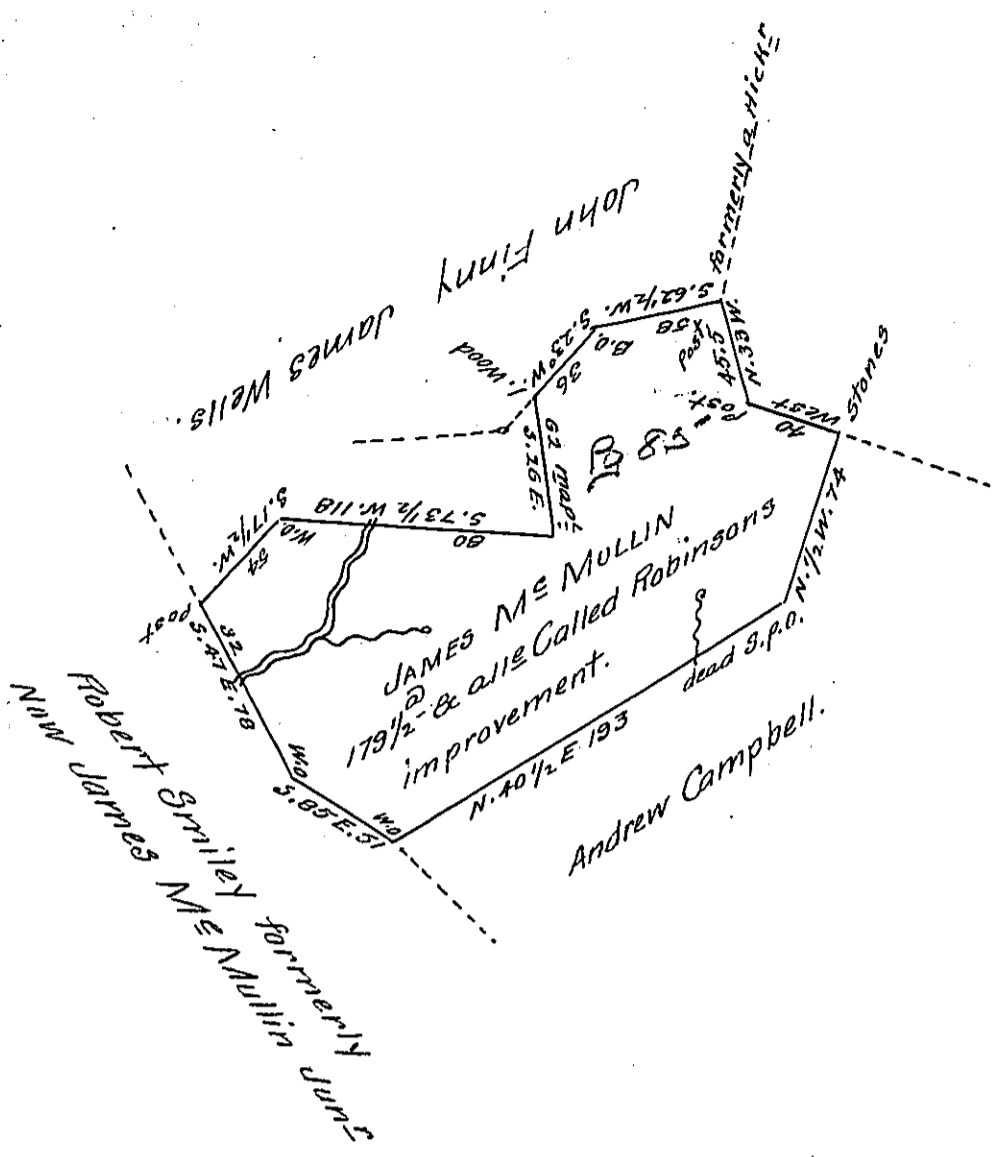


N.B. this survey is said to have laid in the owners hand until the former S.G. got out of Commission, I therefore direct the same to the present S.G. Andrew Porter Esq. for fear of dis-appointment in Patenting the Land  
John McClean, D.S.



Note from good information this Land was well improved when Surveyed had Considerable of Land cleared thereon a small Barn and house with a family then living therein with continued residence ever since  
John McClean D.S.  
To A.P.E.S.G.

Situate on the waters of Quemahoning Creek including his improvement in (Quemahoning Township Bedford County ~~County~~ formerly) Now in Somerset County and Surveyed the 15<sup>th</sup> day March 1799 by John Wells Esquire late Deputy Surveyor as appears by his official Draught remaining in my office in pursuance of a warrant Granted unto James Mc Mullin dated the 25<sup>th</sup> day of ~~January~~ 1774, and Certified the 14<sup>th</sup> day of May 1806.

P<sup>r</sup> John McClean Deputy -

To Andrew Porter Esquire  
Surveyor General of Pennsylvania.

Say Warrant Dated 25<sup>th</sup> Feb<sup>r</sup>y 1774.

IN TESTIMONY that the above is a copy of the original remaining on file in the Department of Internal Affairs of Pennsylvania, made conformably to an Act of Assembly approved the 16th day of February, 1833, I have hereunto set my Hand and caused the Seal of said Department to be affixed at Harrisburg, this twenty seventh day of February 1906

*Isaac R. Brown*  
Secretary of Internal Affairs.